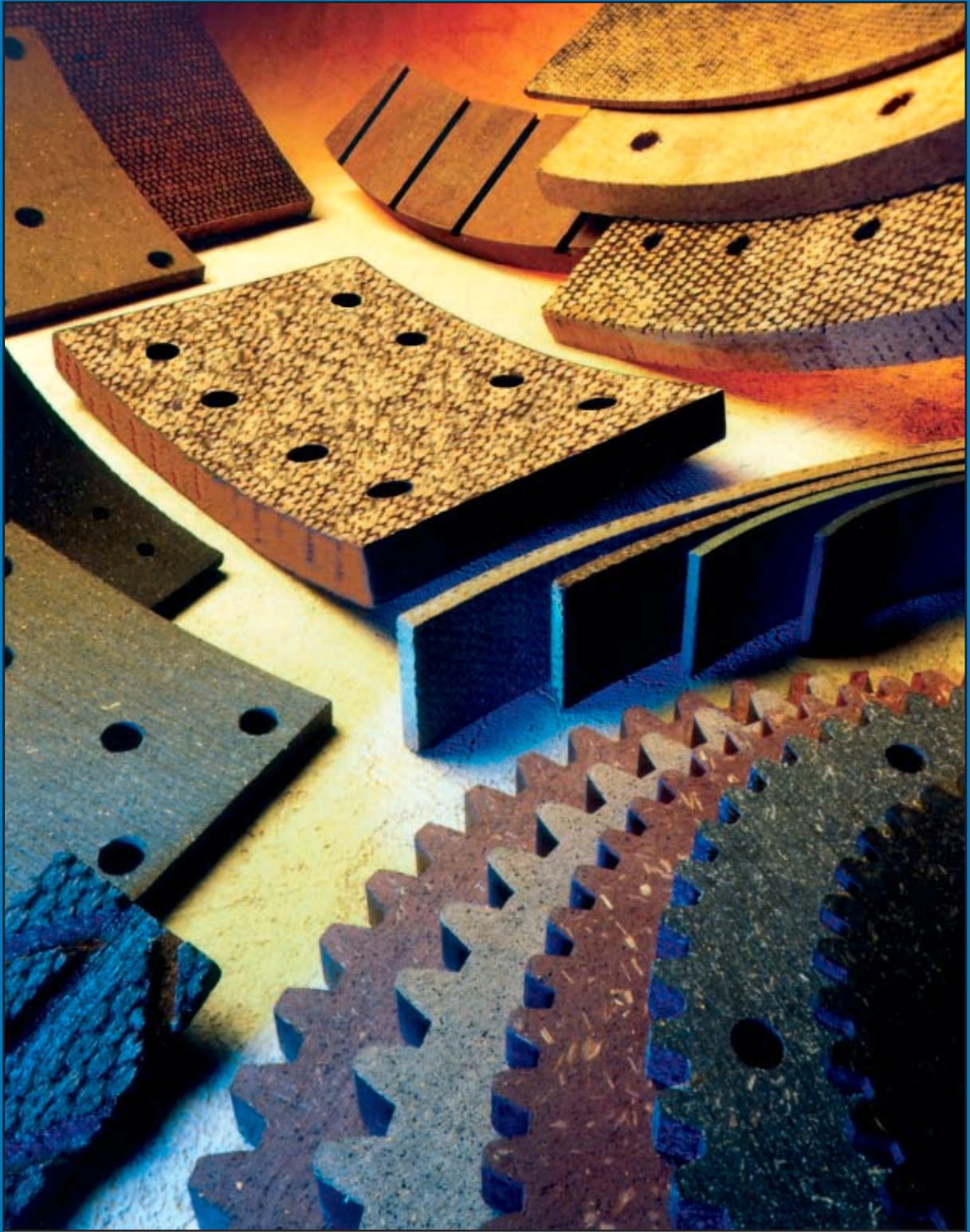
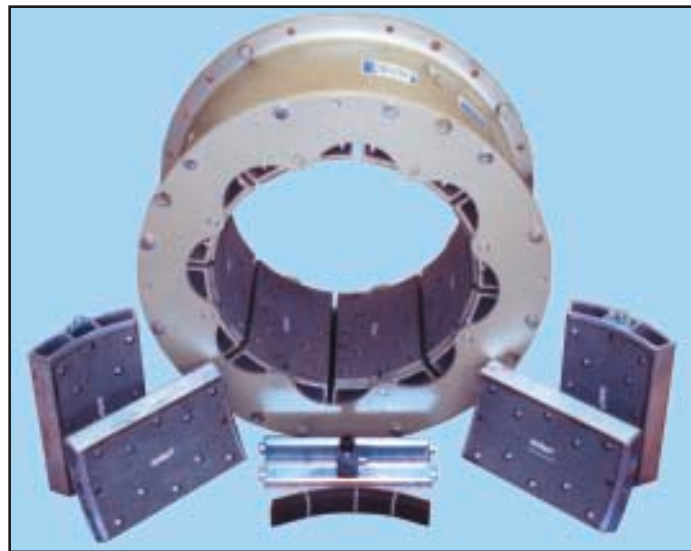




**AF** AMERICAN  
FRICTION Inc.



**AF** AMERICAN  
FRICITION Inc.



**American Friction stocks popular clutches including Airflex “CB” and “VC”, National Oilwell “DyaFlex” type clutches, Twin Disc “PO” type clutches and others. We also have for immediate shipment most of the clutch parts you may need. Send us your old clutch and we will rebuild it to “as new” specs. Please ask us about “core credits” we offer when you place an order for a new or rebuilt clutch.**

## TABLE OF CONTENTS

	<b>Page No.</b>		<b>Page No.</b>
Product Line Sheet.....	1	Mid Continent .....	9
Woven Brake Block Information .....	2	Midway Mfg. Co. ....	9
Molded Brake Block Information .....	2	Moller Mfg. Co. ....	9
<b>DRAWWORKS APPLICATIONS</b>		Mountain Rig .....	9
B.D.W. ....	3	National .....	10
Bethlehem .....	3	Oilwell.....	10 - 11
Brewster .....	3	O.I.M.E. ....	11
Bucyrus Erie .....	3	Pemco "Hoss" .....	11
Cardwell .....	3 - 4	Pool .....	11
Challenger .....	4	RMI .....	11
Champion .....	4	Sea Coast .....	11
Citation .....	4	Shaffer.....	11
Continental Emsco .....	4 - 5	Skytop .....	11 - 12
Cooper .....	5 - 6	Spencer Harris .....	12
Crane Carrier .....	6	Sullivan.....	12
Dugan.....	6	Superior (Dreco).....	12
Failing (George E.).....	6	Taylor.....	12
Franks Cabot.....	6 - 7	Tri Service Machine .....	12
Gardner Denver .....	7	Wagner Moorehouse .....	12
Hopper Hoist .....	7 - 8	Walker Neer .....	12
Ideco .....	8	Wichtex .....	12
Kin Rig.....	8	Wilson .....	12 - 13
Kremco .....	9	<b>Gear Tooth Clutch Facing Information</b> (and Other Special Molded Pieces) .....	14
KSM .....	9	<b>Woven Brake Lining Information</b> .....	14
Lee Engineering .....	9	<b>Brake Block List Prices</b> .....	15 - 17
Mac .....	9	<b>Brass Bolts and Plugs List Prices</b> .....	17
Mainland.....	9		
Mesa .....	9		

## PRODUCT LINE SHEET

**BRAKE BLOCKS** (Woven and Molded for All Oilfield Drilling and Well Servicing Rigs)

**BRAKE RIMS** (Weld-Overlay Rockwell C Scale 50 - 52, Carbon or Stainless Steel Water Jackets)

**BRAKE BANDS** (New or Reworked - Magnfluxed, Re-Formed and Certified)

**BEARINGS** (OEM Certified: for Mud Pump, Drawworks and other Oilfield Applications)

**V-BELT POWERBANDS**

**OVER RUNNING CLUTCHES**

**GEAR TOOTH CLUTCH FACINGS** (for Twin Disc and Wichita Clutches)

COMPLETE PRODUCT LINE OF OEM AND OEM REPLACEMENT CLUTCHES AND BRAKES FOR THE FOLLOWING MANUFACTURERS:

**EATON<sup>®</sup>, AIRFLEX<sup>®</sup>, FAWICK<sup>®</sup> CLUTCHES and BRAKES**

COMPLETE LINE OF "CB", "VC", "EB", AND "E" MODEL CLUTCH ELEMENTS and REPLACEMENT PARTS (Tubes, FSA Kits), ROTARY SEALS, QRV'S.

**WICHITA<sup>®</sup>, and WPT<sup>®</sup> type CLUTCHES and BRAKES**

POWER GRIP, LOW INERTIA, SPRING-SET, COPPER COOL, STEEL WATER COOL, HIGH TORQUE, and POWER TAKE OFFS. COMPLETE CLUTCHES AND REPLACEMENT PARTS SIZES 4" THROUGH 60".

**TWIN DISC<sup>®</sup> PTO TYPE CLUTCHES**

COMPLETE CLUTCHES AND REPLACEMENT PARTS

**NATIONAL OILWELL<sup>®</sup>**

COMPLETE CLUTCHES AND REPLACEMENT PARTS

**DYAFLEX TYPE CLUTCHES<sup>®</sup>**

COMPLETE CLUTCHES AND REPLACEMENT PARTS

**Please call for additional information.**

## WOVEN BRAKE BLOCKS



American Friction Woven Oilfield Brake Blocks are produced using the highest quality heavy duty blended yarns available. These yarns are made with high tensile strength long selected organic and inorganic fibers twisted with brass wire for added strength and improved thermal conductivity. The woven tape is impregnated with high temperature resistant resins and friction modifiers which bonds the material (prevents unraveling), stabilizes the coefficient of friction, and improves wear life. The lining is then tightly compressed into a dense accurate form by calendering, then semi cured. Afterward they are calendered again and final cured. The finished block is sanded to the proper tolerance and radiused. The result of this time consuming process is a very dense, durable and consistently performing brake block.

### ADVANTAGES

- 1) Extreme Heat Resistance
- 2) Coefficient of Friction Remains High at Extreme Temperatures
- 3) Excellent Cool Down (Heat Dissipation)
- 4) Dual Stage Curing (for extra long life and accurate fit)
- 5) High Tensile Strength
- 6) Low Wear Rate
- 7) Non Abrasive to Brake Rims

## MOLDED BRAKE BLOCKS



American Friction Molded Oilfield Brake Blocks are produced using special blends of ingredients including thermosetting resins, reinforcing fibers and friction modifiers. Some of the fibers used to make these blocks include kevlar, acrylic, carbon and glass. The finished block is ground on both sides and grooved cross sectionally to improve flexibility and reduce stress to the radii. A stainless steel wire mesh is molded into the back of the block in order to eliminate the possibility of cracked or broken segments falling away from the brake band. The resultant block has excellent resistance to thermal shock and high tensile and compressive strength.

### ADVANTAGES

- 1) Extreme Heat Resistance
- 2) Coefficient of Friction Remains High at Extreme Temperatures
- 3) Excellent Cool Down (Heat Dissipation)
- 4) Excellent Physical Strength
- 5) Coefficient of Friction Equal to Woven
- 6) Improved Wear Rate Equal to Woven
- 7) Non Abrasive to Brake Rims

MANUFACTURER	MODEL	AMERICAN FRICTION PART NO.	NO PCS.	BLOCK SIZE	QTY. & SIZE SCREWS
<b>B.D.W.</b>	450-T; 650-M	AM-525	18	8 X 1 X 12	64 3/8 X 1-1/4 8 3/8 X 1-1/2
	800-MI; 800-MX	AM-785	22	9 X 1 X 12	84 3/8 X 1-1/4 4 3/8 X 1-1/2
	1350-M;	AM-970	24	10 X 1-1/8 X 12	104 3/8 X 1-1/2 16 3/8 X 2
	1800-M	AM-985	26	10 X 1-1/4 X 12	114 3/8 X 1-1/2 16 3/8 X 2
<b>BETHLEHEM</b>	S-36; S-40; S-45; S-45E	AM-360	18	7 X 1 X 11-7/8	90 5/16 X 1-1/4
	S-50	AM-362	20	7 X 1 X 12	100 5/16 X 1-1/4
	S-55; S-60; M-58	AM-490	20	8 X 1-1/8 X 13-21/32	120 5/16 X 1-1/2
	C-50	AM-500	20	8 X 1-1/8 X 12	120 3/8 X 1-1/2
	OTHER MODELS AVAILABLE: PLEASE CALL				
<b>BREWSTER</b> (SKYTOP BREWSTER)  (See SKYTOP for Well Servicing Rigs)	N-2; N-3; 70-B; F-100	AM-255	18	6 X 3/4 X 12	72 3/8 X 1-1/4
	N-4; N-35; N-4-W	AM-520	18	8 X 3/4 X 12	72 3/8 X 1-1/4
	N-55; N-45; N-4-A; D-4	AM-525	18	8 X 1 X 12	64 3/8 X 1-1/4 8 3/8 X 1-1/2
	N-5	AM-525	22	8 X 1 X 12	88 3/8 X 1-1/4
	N-7; N-75; N-75-A	AM-785	22	9 X 1 X 12	84 3/8 X 1-1/4 4 3/8 X 1-1/2
	N-10; N-85; N-46	AM-970	22	10 X 1-1/8 X 12	94 3/8 X 1-1/2 16 3/8 X 2
	N-95; N-95-A	AM-970	24	10 X 1-1/8 X 12	104 3/8 X 1-1/2 16 3/8 X 2
	N-12; NE-12; N-12-A	AM-985	26	10 X 1-1/4 X 12	114 3/8 X 1-1/2 16 3/8 X 2
	N-20; N-20-A	AM-1160	28	12 X 1-1/4 X 12	124 3/8 X 1-1/2 16 3/8 X 2
	Sand Reels for D-70; N-3; N-4; N-7 70-B	AM-255	14	6 X 3/4 X 12	56 3/8 X 1-1/4
<b>BUCYRUS ERIE</b>	AVAILABLE: PLEASE CALL				
<b>CARDWELL</b>	MA; MH Small Drum; QS; QST; Q-100; Q-101; Both Drums	AM-280	14	6 X 5/8 X 9-13/16	70 1/4 X 1
	AH; AL; HL; HS; (MA, MH Big Drum); A-150; A-151	AM-375	18	7 X 5/8 X 10-1/2	90 5/16 X 1-1/4
	A-100; AB-100 (both drums)	AM-381	18	7 X 3/4 X 10	90 5/16 X 1-1/4

MANUFACTURER	MODEL	AMERICAN FRICTION PART NO.	NO PCS.	BLOCK SIZE	QTY. & SIZE SCREWS	
<b>CARDWELL</b>	KL; KS; L; LA; K; K-150; K-200; K-201; K-202; M-200; A-150-A; SKYHORSE	AM-535	18	8 X 3/4 X 10-29/32	90	5/16 X 1-1/4
	K-150; KB-150	AM-535-1	18	8 X 1 X 10-29/32	90	5/16 X 1-1/4
	L-350; M-250; K-200-A; K-201-A; KB-200-A; KM-200-A; C-HORSE	AM-545	20	8 X 1 X 10-5/16	100	5/16 X 1-1/4
	RL; S; SS; SU; RS	AM-795	24	9 X 3/4 X 10	120	5/16 X 1-1/4
	D; D-66; DS; DT; J-450; K-210; K-210-A; K-211; KB-210; KB-210-A; KM-210; K-250; KB-250; KM-250; O; OA; OC; R; S-350; T; TR; K-250-A; K-210-B	AM-805	24	9 X 1 X 10-1/4	120	5/16 X 1-1/4
	J-700	AM-815	24	9 X 1 X 10-3/4	120	5/16 X 1-1/4
	K-500; KB-500; K-700; K-600	AM-990	24	10 X 1 X 10-3/4	120	5/16 X 1-1/4
	K-200-B; K-200-C; KB-200-B; KB-200-C; KM-200-B; KB-225-96	AM-1000	20	10 X 1 X 10-15/16	100	5/16 X 1-1/4
	K-1000; KB-1000; KH-1000	AM-1162	24	12 X 1-1/8 X 12	144	3/8 X 1-1/2
<u>SAND REELS: AVAILABLE: PLEASE CALL</u>						
<b>CHALLENGER</b>	280	AM-252	14	6 X 3/4 X 12	56	3/8 X 1-1/4
	320; 320H; 360	AM-528	16	8 X 1 X 12	96	3/8 X 1-1/4
<b>CHAMPION</b>	400	AM-970	20	10 X 1-1/8 X 12	100	3/8 X 1-1/2
<b>CITATION</b>	A-1000	AM-910	22	9-3/4 X 1-1/4 X 12	132	3/8 X 1-3/4
<b>CONTINENTAL EMSCO</b>	GA-250-T; G-36; G-300; GA-350; GB-350; GC-350	AM-285	16	6-1/2 X 1 X 13	64	3/8 X 1-1/4
	GA-160-T	AM-405	14	7-1/2 X 1 X 12	56	3/8 X 1-1/4
	GB-160-T; GB-160-TS	AM-405	16	7-1/2 X 1 X 12	64	3/8 X 1-1/4
	GC-350-T; GB-250-T; GB-350-T; GC-305-T	AM-405	18	7-1/2 X 1 X 12	72	3/8 X 1-1/4
	G-42; G-450; G-500; GA-500; GB-500	AM-405	20	7-1/2 X 1 X 12	80	3/8 X 1-1/4
	GC-500; A-550; WSI; D-2	AM-555	20	8 X 1 X 12	80	3/8 X 1-1/4
	GB-800; A-800; A-800-E	AM-825	20	9 X 1-1/8 X 13	120	3/8 X 1-1/2



MANUFACTURER	MODEL	AMERICAN FRICTION PART NO.	NO PCS.	BLOCK SIZE	QTY. & SIZE SCREWS
<b>CONTINENTAL EMSCO</b>  (4) 4 HOLE (6) 6 HOLE #7602-1370-25	J-750; J-1000; CB-54; H-54; H-54-A; UB-54; UH-54-A; UBLS-54; EC-54; ECA-54; FRC-54; ED; DEL; D-3 54 SERIES; TYPE A, C, CA, CB & CC-54" BRAKES	AM-835 (4) AM-840 (6)	20	9 X 1-1/4 X 12	68 (4H) 3/8 X 1-1/2 12 3/8 X 2 108 (6H) 3/8 X 1-1/2 12 3/8 X 2
	J-1400; J-1600; ECC	AM-840	24	9 X 1-1/4 X 12	132 3/8 X 1-1/2 12 3/8 X 2
	J-1250	AM-840	24	9 X 1-1/4 X 12	132 3/8 X 1-1/2 12 3/8 X 2
	J-2000; EDA-60-L	AM-840	26	9 X 1-1/4 X 12	144 3/8 X 1-1/2 12 3/8 X 2
	EDE; EDES	AM-1020	22	10 X 1-1/4 X 12	132 3/8 X 1-1/2
	A-1100; ELECTROHOIST II (#1-15)	AM-1020	24	10 X 1-1/4 X 12	140 3/8 X 1-1/2 4 3/8 X 2
	A-1500; A-1500-E	AM-1020	28	10 X 1-1/4 X 12	164 3/8 X 1-1/2 6 3/8 X 2
	C-1	AM-1105	22	10 X 1-1/4 X 12	128 3/8 X 1-1/2 4 3/8 X 2
	C-2; ELECTROHOIST II (#16 & UP)	AM-1105	24	10 X 1-1/4 X 12	140 3/8 X 1-1/2 4 3/8 X 2
	C-3	AM-1105	28	10 X 1-1/4 X 12	164 3/8 X 1-1/2 6 3/8 X 2
	ELECTROHOIST III; CE-3000; B-3661	AM-1155	30	12 X 1-1/4 X 12	180 3/8 X 1-1/2
	<u>SAND REELS: AVAILABLE: PLEASE CALL</u>				
<b>COOPER</b>  (4) 4 HOLE (6) 6 HOLE	A-26; A-26-26; TR-26-26; TR-26	AM-255	12	6 X 3/4 X 12	48 3/8 X 1-1/4
	P-32; P-132	AM-255	14	6 X 3/4 X 12	56 3/8 X 1-1/4
	TR-36; TRP-136; P-136	AM-295 (4) AM-290 (6)	16	6 X 1 X 12	64 (4H) 3/8 X 1-1/4 96 (6H) 3/8 X 1-1/4
	A-32; A-32-32; TR-32; TR-32-32; LTO-32-32; 32 X 8	AM-525 (4) AM-528 (6)	16	8 X 1 X 12	64 (4H) 3/8 X 1-1/4 96 (6H) 3/8 X 1-1/4
	A-38; TR-38; LTO-38-38; LTO-150; TC-38; 38 X 8	AM-525 (4) AM-528 (6)	18	8 X 1 X 12	72 (4H) 3/8 X 1-1/4 108 (6H) 3/8 X 1-1/4
	A-42; A-142; LTO-250; 42 X 8	AM-525 (4) AM-528 (6)	20	8 X 1 X 12	80 (4H) 3/8 X 1-1/4 120 (6H) 3/8 X 1-1/4

MANUFACTURER	MODEL	AMERICAN FRICTION PART NO.	NO PCS.	BLOCK SIZE	QTY. & SIZE SCREWS	
<b>COOPER</b>	LTO-38-38; 3810	AM-1030	18	10 X 1 X 12	108 3/8 X 1-1/4	
	A-4210; TR-4210; LTO-4210; LTO-350-10	AM-1025 (4) AM-1030 (6)	20	10 X 1 X 12	80 (4H) 3/8 X 1-1/4 120 (6H) 3/8 X 1-1/4	
	OILER 4212-42; LTO-4212; LTO-350-12; LTO-550; LTO-750	AM-1162	20	12 X 1-1/8 X 12	120 3/8 X 1-1/2	
	<u>SAND REEL</u> : 38 X 8	AM-528	18	8 X 1 X 12	108 3/8 X 1-1/4	
	<u>SAND REEL</u> : 42 X 8	AM-528	20	8 X 1 X 12	120 3/8 X 1-1/4	
<b>CRANE CARRIER</b> (CORSAIR)	42 X 8; 300	AM-525	20	8 X 1 X 12	80 3/8 X 1-1/4	
	42 X 10; 400	AM-875	20	10 X 1 X 12	120 3/8 X 1-1/4	
	42 X 12; 500	AM-1162	20	12 X 1-1/8 X 12	120 3/8 X 1-1/2	
	<u>SAND REELS</u> For 42 X 8; 42 X 10	AM-525	20	8 X 1 X 12	80 3/8 X 1-1/4	
<b>FAILING</b> (GEORGE E.)	2500	AM-415	16	7 X 3/4 X 8-3/4	64 3/8 X 1-1/4	
	3500	AM-845	14	9 X 1 X 12	84 3/8 X 1-1/4	
<b>DUGAN</b>	DS-5	AM-525	18	8 X 1 X 12	72 3/8 X 1-1/2	
<b>FRANKS CABOT</b>	SUPER SENIOR; NO 33; EAST TX; 4000; 3000A; 4000A	AVAILABLE: PLEASE CALL				
	NO 44 (OLD 4000); 844	AM-580	16	8 X 1 X 12	128 5/16 X 1-1/4	
	SA 4500	AM-580	18	8 X 1 X 12	144 5/16 X 1-1/4	
	NO 65 (OLD 5000); 865; 120	AM-580 AM-590	18 2	8 X 1 X 12 8 X 1 X 6	152 5/16 X 1-1/4	
	3810; 65-10; 1058	AM-1040 AM-1050	18 2	10 X 1 X 12 10 X 1 X 6	152 5/16 X 1-1/4	
	658; 87 (OLD 7000) AIR COOLED	AM-1040 AM-1050	20 2	10 X 1 X 12 10 X 1 X 6	168 5/16 X 1-1/4	
	SA 5000, SA 6000 & SG 101 WATER COOLED	AM-1040 AM-1050	22 2	10 X 1 X 12 10 X 1 X 6	184 5/16 X 1-1/4	
	M 5000 LT & 137 WATER COOLED	AM-1040 AM-1060	22 2	10 X 1 X 12 10 X 1 X 3	184 5/16 X 1-1/4	
	4212; 300; 750; 1287; 1287TD; 2042	AM-1165 AM-1175	20 2	12 X 1-1/8 X 12 12 X 1-1/8 X 6	136 5/16 X 1-1/4 32 5/16 X 1-1/2	
	900; 1000; 2346	AM-1165 AM-1175	22 2	12 X 1-1/8 X 12 12 X 1-1/8 X 6	168 5/16 X 1-1/4 16 5/16 X 1-1/2	
	1200; 1500; 2550	AM-1165 AM-1175	24 2	12 X 1-1/8 X 12 12 X 1-1/8 X 5-1/2	180 5/16 X 1-1/4 20 5/16 X 1-1/2	
	<u>SAND REELS</u> : FOR 80; 3208; 844	AM-580	16	8 X 1 X 12	128 5/16 X 1-1/4	

MANUFACTURER	MODEL	AMERICAN FRICTION PART NO.	NO PCS.	BLOCK SIZE	QTY. & SIZE SCREWS	
<b>FRANKS CABOT</b>	SAND REELS: FOR 65; 120; 1287 special; 1058	AM-580 AM-590	18 2	8 X 1 X 12 8 X 1 X 6	152 5/16 X 1-1/4	
	SAND REELS: FOR 87-8; 8160; 1287 standard; 160	AM-580 AM-590	20 2	8 X 1 X 12 8 X 1 X 6	168 5/16 X 1-1/4	
	SAND REELS: FOR 87-10; 658	AM-1040 AM-1050	20 2	10 X 1 X 12 10 X 1 X 6	168 5/16 X 1-1/4	
<b>GARDNER DENVER</b>	2500 MAYHEW	AM-520	14	8 X 3/4 X 12	56 3/8 X 1-1/4	
	3000 MAYHEW	AM-520	18	8 X 3/4 X 12	72 3/8 X 1-1/4	
	5000 MAYHEW	AM-525	22	8 X 1 X 12	88 3/8 X 1-1/4	
	500; 1500-S; 500-E; 500S	AM-525	20	8 X 1 X 12	80 3/8 X 1-1/4	
	700; 700E; 800; 800E; 1000S	AM-855	20	9 X 1 X 12	120 3/8 X 1-1/4	
	1100; 1100E	AM-1070	22	10 X 1-1/8 X 12	132 3/8 X 1-1/2	
	1500; 1500RE	AM-1110	24	11 X 1-1/4 X 12	144 3/8 X 1-1/2	
	2100; 2100E; 3000E	AM-1185	26	12 X 1-1/4 X 12	156 3/8 X 1-1/2	
SAND REELS: AVAILABLE: PLEASE CALL						
<b>HOPPER HOIST</b>	IG MAIN DRUM	AM-520	16 OR 18	8 X 3/4 X 12 OR	64 3/8 X 1-1/4 72 3/8 X 1-1/4	
	IGX	AM-865	18	9 X 3/4 X 12	72 3/8 X 1-1/4	
	G (S/N 1 THRU 127)	AM-785	16	9 X 1 X 12	64 3/8 X 1-1/4	
	G (S/ N 128 & LATER)	AM-785	20	9 X 1 X 12	80 3/8 X 1-1/4	
	GXXTA (OLD STYLE)	AM-1075	18	10 X 1 X 12	90 3/8 X 1-1/4	
	GX MAIN DRUM OR SAND REEL THRU S/N 152	AM-1075 AM-1080	18 2	10 X 1 X 12 10 X 1 X 6	94 3/8 X 1-1/4	
	GX MAIN DRUM; GXXTA (NEW STYLE); OR SAND REEL AFTER S/N 152	AM-1075 AM-1080	20 2	10 X 1 X 12 10 X 1 X 6	104 3/8 X 1-1/4	
	RTA	AM-970 AM-976	20 2	10 X 1-1/8 X 12 10 X 1-1/8 X 2-1/2	104 3/8 X 1-1/2	
	M THRU S/N 107	AM-985	18	10 x 1-1/4 x 12	90 3/8 x 1-1/2	
	M AFTER S/N 107	AM-985	24	10 X 1-1/4 X 12	90 3/8 X 1-1/2	
	GX SPECIAL	AVAILABLE: PLEASE CALL				
	GXHTA	AM-1167 AM-1180	20 2	12 X 1-1/8 X 12 12 X 1-1/8 X 6	168 3/8 X 1-1/2	
	CLUTCH BLOCKS: AVAILABLE: PLEASE CALL					
	SAND REELS: AVAILABLE: PLEASE CALL					

MANUFACTURER	MODEL	AMERICAN FRICTION PART NO.	NO PCS.	BLOCK SIZE	QTY. & SIZE SCREWS
<b>IDECO</b>	H-20; M-20	AM-387	16	7 X 3/4 X 12	64 3/8 X 1-1/4
	4050; 5060; S.W. 7000; & 7000A; S.U. 7000	AM-520	16	8 X 3/4 X 12	64 3/8 X 1-1/4
	S.W. 10000 & 10000-A; S.U. 10000; PR-150-B; PR 600; TC 600; H-25; M-25; H-30	AM-520	18	8 X 3/4 X 12	72 3/8 X 1-1/4
	6070; 7080; S.W. 15000 & 15000-A; S.U. 15000; PR-150-A; M-35; H-35 8"	AM-520	20	8 X 3/4 X 12	80 3/8 X 1-1/4
	H-25-C; M-25; H-30-C (S/N 80 & 82 UP)	AM-525	18	8 X 1 X 12	72 3/8 X 1-1/4
	H-40; H-525; H-725; H; M; SUPER 750; H-35-C 8"	AM-525	20	8 X 1 X 12	80 3/8 X 1-1/4
	LUCKY 711; 900	AM-610	22	8 X 1-1/4 X 12	132 3/8 X 1-1/2
	H-35-K; H-37-E; H-37-ED; H-37-KD; H-35-C 10"	AM-1090	20	10 X 1 X 12	80 3/8 X 1-1/4
	PR-800; M-10000; LITTLE GIANT; H-700; H-711	AM-1100	18	10 X 1-1/4 X 12	72 3/8 X 1-1/2
	PR-1050; JR. GIANT; 10263 SUPER DUTY; JR. SUPER 711; 1200; SUPER 711 (THRU S/N 178)	AM-1100 (4) AM-1106 (6)	20	10 X 1-1/4 X 12	80 (4H) 3/8 X 1-1/2 120 (6H) 3/8 X 1-1/2
	H-1000; PR-1350; 1350-S; 1350-ST; BIG GIANT	AM-1100	22	10 X 1-1/4 X 12	88 3/8 X 1-1/2
	2500-H, M, & E (S/N 153, 154, 155, 161, 162 & 163)	AM-1100	22	10 X 1-1/4 X 12	88 3/8 X 1-1/2
	PR-1000	AM-1100	24	10 X 1-1/4 X 12	96 3/8 X 1-1/2
	SUPER 711 (S/N 179 & UP); HE-1700; MSA-1200 & 2000	AM-1105	24	10 X 1-1/4 X 12	144 3/8 X 1-1/2
	2100-H, M, & E; 2500-H, M, & E	AM-1105	26	10 X 1-1/4 X 12	156 3/8 X 1-1/2
	H-44-C	AM-1115	20	11 X 1-1/8 X 12	120 3/8 X 1-1/2
	E3000	AM-1190	30	12 X 1-1/4 X 12	180 3/8 X 1-1/2
<b>SAND REELS: AVAILABLE: PLEASE CALL</b>					
<b>KIN RIG</b>	26 X 8	AM-518	16	8 X 3/4 X 12	96 3/8 X 1-1/4
	32 X 8	AM-585	16	8 X 1 X 12	96 3/8 X 1-1/4
	38 X 10	AM-875	18	10 X 1 X 12	108 3/8 X 1-1/4

MANUFACTURER	MODEL	AMERICAN FRICTION PART NO.	NO PCS.	BLOCK SIZE	QTY. & SIZE SCREWS
<b>KREMCO</b>	200	AM-430	16	7 X 3/4 X 10-3/4	64 3/8 X 1-1/4
	300	AM-387	16	7 X 3/4 X 12	64 3/8 X 1-1/4
	400	AM-520	18	8 X 3/4 X 12	72 3/8 X 1-1/4
	600; 650	AM-1025	20	10 X 1 X 12	80 3/8 X 1-1/4
	K-1000	AM-1115	18	11 X 1-1/8 X 12	180 3/8 X 1-1/2
	750	AM-1115	20	11 X 1-1/8 X 12	120 3/8 X 1-1/2
	<u>SAND REEL:</u> 400	AM-387	16	7 X 3/4 X 12	64 3/8 X 1-1/4
	<u>SAND REEL:</u> 600	AM-520	18	8 X 3/4 X 12	72 3/8 X 1-1/4
	<u>SAND REEL:</u> 750	AM-520	20	8 X 3/4 X 12	80 3/8 X 1-1/4
<b>KSM</b>	350	AM-387	16	7 X 3/4 X 12	64 3/8 X 1-1/4
	450	AM-520	18	8 X 3/4 X 12	72 3/8 X 1-1/4
	550	AM-1025	20	10 X 1 X 12	80 3/8 X 1-1/4
<b>LEE ENGINEERING</b>	38 X 8	AM-525	18	8 X 1 X 12	72 3/8 X 1-1/4
	42 X 8	AM-525	20	8 X 1 X 12	80 3/8 X 1-1/4
	42 X 10	AM-875	20	10 X 1 X 12	120 3/8 X 1-1/4
<b>MAC</b>	300; 400	AM-430	20	7X 3/4 X 10-3/4	80 3/8 X 1-1/4
<b>MAINLAND</b>	320	AM-375-1	18	7 X 3/4 X 10-1/2	90 5/16 X 1-1/4
	360	AM-535-1	18	8 X 1 X 10-29/32	90 5/16 X 1-1/4
	400, 42 X 10	AM-1000	20	10 X 1 X 10-15/16	100 5/16 X 1-1/4
<b>MESA</b>	350, 42 X 10	AM-1040 AM-1060	20 2	10 X 1 X 12 10 X 1 X 3	164 5/16 X 1-1/4
<b>MID CONTINENT</b>  (UNIT RIG)	U-34; U-34-D; U-34-E	AM-430	20	7 X 3/4 X 10-3/4	80 3/8 X 1-1/4
	U-40	AM-890	18	10 X 1-1/8 X 12	72 3/8 X 1-1/2
	U-15; U-35; U-36; U-22; U-10 (S/N 80 & UP); U-36-A; U-36-EA	AM-890 (4) AM-1072 (6)	20	10 X 1-1/8 X 12	80 (4H) 3/8 X 1-1/2 120 (6H) 3/8 X 1-1/2
	U-20	AM-895 (4) AM-896 (6)	20	10 X 1-1/4 X 12-3/4	80 (4H) 3/8 X 1-1/2 120 (6H) 3/8 X 1-1/2
	U-712-A; U-712-EA	AM-1107	22	10 X 1-1/4 X 11-1/2	132 3/8 X 1-1/2
	U-914-A; U-914-B; U-914-C; U-914-EC	AM-895 (4) AM-896 (6)	22	10 X 1-1/4 X 12-3/4	88 (4H) 3/8 X 1-1/2 132 (6H) 3/8 X 1-1/2
	U-30; U-1220-A; U-1220-B; U-1220-EB	AM-1100 (4) AM-1106 (6)	28	10 X 1-1/4 X 12	112 (4H) 3/8 X 1-1/2 168 (6H) 3/8 X 1-1/2
	<u>SAND REELS:</u> AVAILABLE:	PLEASE CALL			
	<b>MIDWAY MFG. CO.</b>	AVAILABLE: PLEASE CALL			

MANUFACTURER	MODEL	AMERICAN FRICTION PART NO.	NO PCS.	BLOCK SIZE	QTY. & SIZE SCREWS	
<b>MOLLER MFG CO.</b>	D-322, 38 X 8	AM-585	16	8 X 1 X 12	96 3/8 X 1-1/4	
	D-401; D-402; S-400, 42X10	AM-1070	20	10 X 1-1/8 X 12	120 3/8 X 1-1/2	
<b>MOUNTAIN RIG</b>	AVAILABLE: PLEASE CALL					
<b>NATIONAL</b>	T-8; T-8-S	AM-320	14	6-1/2 X 3/4 X 11-1/2	56 3/8 X 1-1/4	
	T-12; T-16; T-20; T-20-S	AM-440	16	7-1/2 X 3/4 X 11	64 3/8 X 1-1/4	
	T-12 (S/N 1513 & UP); T-12-S; 200	AM-440	18	7-1/2 X 3/4 X 11	72 3/8 X 1-1/4	
	(4) 4 HOLE 300	AM-450	20	7-1/2 X 1 X 11-1/4	80 3/8 X 1-1/4	
	(6) 6 HOLE 30; 40;	AM-615	18	8 X 3/4 X 11-1/2	72 3/8 X 1-1/4	
	*(T627924-G9 IS SAME AS 627924-NA)	T-25; T-32; 50; 50-A; 55; 55-P; T-45 (4 HOLE ONLY); H-4-10; 610;	AM-625 (4) AM-635 (6)	18	8 X 1-1/8 X 11-1/2	72 (4H) 3/8 X 1-1/2 108 (6H) 3/8 X 1-1/2
	(4) 4 HOLE K-42 BRAKES; 370					
	(6) 6 HOLE *(T627925-G9 IS SAME AS 627925-NA)	75; 75-CA; 75-CB; 80; 80-E; 80-B; K-46 BRAKES	AM-910	18	9-3/4 X 1-1/4 X 12	108 3/8 X 1-1/2
		4426; 400	AM-1070	16	10 X 1-1/8 X 12	96 3/8 X 1-1/2
		600	AM-1070	20	10 X 1-1/8 X 12	120 3/8 X 1-1/2
		110; 110-UE; K-50 BRAKES	AM-920	20	9-3/4 X 1-1/4 X 12	120 3/8 X 1-1/2
	(940 IS SAME AS 925) (910 IS SAME AS 946) (920 IS SAME AS 892)	100; 125; 130; 1320-DE; 1320-M; 1320-UE; 34-10-FE; K-54 BRAKES	AM-940 AM-965	20 2	9-3/4 X 1-1/4 X 13 9-3/4 X 1-1/4 X 2-1/2	124 3/8 X 1-1/2
	*T627715-G10 IS SAME AS 627715-NA)	160; 1625; 1625-M; 1625-DE; 33-62-FE; 34-62-FE; K-62 BRAKES	AM-940	24	9-3/4 X 1-1/4 X 13	144 3/8 X 1-1/2
	<b>INERTIA BRAKES</b> 1320, 1625	AVAILABLE: PLEASE CALL				
	<u>SAND REELS:</u> FOR 50A; 55; C-75; 370; 610; 80B; 100; 110-UE	AM-465	16	7-1/2 X 3/4 X 12	64 3/8 X 1-1/4	
	<u>SAND REELS:</u> FOR 125; 130; 1320-DE; 1625-M; 1625M	AM-615	18	8 X 3/4 X 11-1/2	72 3/8 X 1-1/4	
<b>OILWELL</b>	64-A	AM-475	26	7 X 1 X 8	104 3/8 X 1-1/4	
	64-B	AM-475	34	7 X 1 X 8	136 3/8 X 1-1/4	
	52-T	AM-645	16	8 X 1 X 12-1/2	56 3/8 X 1-1/4 8 3/8 X 2	
	500	AM-525	16	8 X 1 X 12	64 3/8 X 1-1/4	

MANUFACTURER	MODEL	AMERICAN FRICTION PART NO.	NO PCS.	BLOCK SIZE	QTY. & SIZE SCREWS
<b>OILWELL</b>	660; 700	AM-655	18	8 X 1-1/8 X 12	108 3/8 X 1-1/2
	66; 63-T	AM-660	20	8 X 1-1/8 X 12-1/2	68 3/8 X 1-1/4 12 3/8 X 2
	76; 760	AM-1100	20	10 X 1-1/4 X 12	80 3/8 X 1-1/2
	E-2000; M-2000	AM-1105	26	10 X 1-1/4 X 12	156 3/8 X 1-1/2
	860; 840-E	AM-950	22	10 X 1-1/4 X 12	112 3/8 X 1-1/2 20 3/8 X 2
	940-E; 96	AM-1120	24	11 X 1-1/4 X 12	94 3/8 X 1-1/2 26 3/8 X 2
	E-3000; M-3000	AM-1190	28	12 X 1-1/4 X 12	168 3/8 X 1-1/2
	INERTIA BRAKE NEUTRAL BRAKE	AVAILABLE: PLEASE CALL			
	<u>SAND REELS</u> : AVAILABLE: PLEASE CALL				
<b>O.I.M.E.</b> (PARTECH) (PARKER TECHNOLOGIES)	350	AM-1040-1 AM-1050-1	20 2	10 X 1-1/8 X 12 10 X 1-1/8 X 6	136 5/16 X 1-1/4 32 5/16 X 1-1/2
	500	AM-680	20	8 X 1-1/8 X 12	80 3/8 X 1-1/2
	750; SL5	AM-985	16	10 x 1-1/4 x 12	80 3/8 x 1-1/2
	SL-1000; 950; SL7	AM-985	18	10 x 1-1/4 x 12	90 3/8 X 1-1/2
	1250; SL-1250; SL-1500; SOME 2000	AM-1160	18	12 X 1-1/4 X 12	90 3/8 X 1-1/2
	AT-2400	AM-1160	20	12 X 1-1/4 X 12	100 3/8 X 1-3/4
	SOME 2000; 2500; 3000	AM-1160	22	12 X 1-1/4 X 12	110 3/8 X 1-1/2
	4000	AM-1190	32	12 X 1-1/4 X 12	192 3/8 X 1-1/2
	5000	AM-1203	34	14 X 1-1/4 X 14	272 3/8 X 1-1/2
<b>PEMCO "HOSS"</b>	1015	AM-1040 AM-1050	20 2	10 X 1 X 12 10 X 1 X 6	168 5/16 X 1-1/4
	1220	AM-1165 AM-1175	20 2	12 X 1-1/8 X 12 12 X 1-1/8 X 6	152 5/16 X 1-1/4 16 5/16 X 1-1/2
		<u>SAND REELS</u> : AVAILABLE: PLEASE CALL			
<b>POOL</b>	300; 400	AM-955	20	10 X 1-1/8 X 12	104 3/8 X 1-1/2 76 3/8 X 2
	750	AM-985	16	10 X 1-1/4 X 12	80 3/8 X 1-1/2
	1500	AM-1160	18	12 X 1-1/4 X 12	90 3/8 X 1-1/2
		<u>SAND REELS</u> : AVAILABLE: PLEASE CALL			
<b>RMI</b>	4210, 750	AM-970	20	10 X 1-1/8 X 12	100 3/8 X 1-1/2
	1000; 4610	AM-970	22	10 X 1-1/8 X 12	110 3/8 X 1-1/2
	38 X 8 Swab Unit	AM-680	18	8 X 1-1/8 X 12	72 3/8 X 1-1/2

MANUFACTURER	MODEL	AMERICAN FRICTION PART NO.	NO PCS.	BLOCK SIZE	QTY. & SIZE SCREWS
<b>SEA COAST</b>	AVAILABLE: PLEASE CALL				
<b>SHAFFER</b>	AVAILABLE: PLEASE CALL				
<b>SKYTOP</b> (SKYTOP BREWSTER) MOBILE RIGS (SEE BREWSTER FOR ROTARY RIGS)	H-32-38; H-32	AM-520	16	8 X 3/4 X 12	64 3/8 X 1-1/4
	H-38; H-38-42 (THRU S/N H-1135); HI-3208	AM-670	16	8 X 1-1/8 X 11-3/4	64 3/8 X 1-1/2
	H-42; H-42-42 (THRU S/N H-1135; B-38 S.U.	AM-670	18	8 X 1-1/8 X 11-3/4	72 3/8 X 1-1/2
	H-38 (AFTER S/N H-1135); HI-3808-HS; 38 X 8	AM-680	18	8 X 1-1/8 X 12	72 3/8 X 1-1/2
	H-42 (AFTER S/N H-1135); 42 X 8	AM-680	20	8 X 1-1/8 X 12	80 3/8 X 1-1/2
	HI-4210; HI-4210-A; DH-4210; N-42; 550	AM-970	20	10 X 1-1/8 X 12	100 3/8 X 1-1/2
	HI-4610; HI-4610-A; DHI-4610-A; DH-4610; N-46; 600	AM-970	22	10 X 1-1/8 X 12	110 3/8 X 1-1/2
	<u>SAND REELS</u> : For 4610; 4210; 3808	AM-680	18	8 X 1-1/8 X 12	72 3/8 X 1-1/2
<b>SPENCER HARRIS</b>	5000; 6000	AM-520	18	8 X 3/4 X 12	72 3/8 X 1-1/4
	7000	AM-520	20	8 X 3/4 X 12	80 3/8 X 1-1/4
<b>SULLIVAN</b>	AVAILABLE: PLEASE CALL				
<b>SUPERIOR</b> (DRECO)	300; 400; 500; 700	AM-525	18	8 X 1 X 12	72 3/8 X 1-1/4
	1000	AM-910	18	9-3/4 X 1-1/4 X 12	108 3/8 X 1-1/2
	1500	AM-920	20	9-3/4 X 1-1/4 X 12	120 3/8 X 1-1/2
	2000	AM-940	20	9-3/4 X 1-1/4 X 13	120 3/8 X 1-1/2
	4000	AM-1190	32	12 X 1-1/4 X 12	192 3/8 X 1-3/4
	<u>SAND REELS</u> : AVAILABLE: PLEASE CALL				
<b>TAYLOR</b>	38 x 8	AM-525	18	8 X 1 X 12	72 3/8 X 1-1/4
	38 X 10 Mdl-360 42 X 10	AM-875 AM-875	18	10 X 1 X 12	108 3/8 X 1-1/4
	42 X 8	AM-525	20	8 X 1 X 12	80 3/8 X 1-1/2
	42 X 12	AM-1162	20	12 X 1-1/8 X 12	120 3/8 X 1-1/2
<b>TEXAS FLANGE</b>	T-1200	AM-910	18	9-3/4 X 1-1/4 X 12	108 3/8 X 1-1/2
<b>TRI SERVICE MACHINE</b>	TSM-6000	AM-520	18	8 X 3/4 X 12	72 3/8 X 1-1/4
	TSM-6000-A; TSM-7000-A	AM-1025	20	10 X 1 X 12	80 3/8 X 1-1/4



MANUFACTURER	MODEL	AMERICAN FRICTION PART NO.	NO PCS.	BLOCK SIZE	QTY. & SIZE SCREWS	
<b>WAGNER MOREHOUSE</b>	AVAILABLE: PLEASE CALL					
<b>WALKER NEER</b>	AVAILABLE: PLEASE CALL					
<b>WICHTEX</b>	AVAILABLE: PLEASE CALL					
<b>WILSON</b>	SENIOR & MASTER BW-30-3; SENIOR & MASTER BW-30-5; SUPER BW-32-3 & BW-32-5 & BW-38-5; MOGUL CORE REEL; MOGUL BW-38-5	AVAILABLE: PLEASE CALL				
	MOGUL BW-38-8; SUPER 38 (MODEL 30)	AM-750	22	8 X 1 X 10-1/8	84 48	3/8 X 1-1/4 3/8 X 2
	SUPER MOGUL 42 (MODEL 75); 75-P; MOGUL 42 (MODEL 65); 65-P; TORCAIR; 190-38-9	AM-750	24	8 X 1 X 10-1/8	100 44	3/8 X 1-1/4 3/8 X 2
	GIANT BW-56; MOGUL 4210	AM-955	20	10 X 1-1/8 X 12	104 76	3/8 X 1-1/2 3/8 X 2
	ATLAS; SUPER ATLAS; SUPER GIANT 90; BW-56 (MODEL 120)	AM-955	22	10 X 1-1/8 X 12	122 76	3/8 X 1-1/2 3/8 X 2
	TITAN BW-56 (MODEL 150) SUPER TITAN BW-56 (MODEL 150A); TORCAIR; ROADAIR	AM-955	26	10 X 1-1/8 X 12	158 76	3/8 X 1-1/2 3/8 X 2
	SAND REELS: FOR 4210; 38 X 8	AM-750	22	8 X 1 X 10-1/8	84 48	3/8 X 1-1/4 3/8 X 2
	SAND REELS: FOR Super Giant 90; 120; 150; 250; 42 x 8	AM-750	24	8 X 1 X 10-1/8	100 44	3/8 X 1-1/4 3/8 X 2

## GEAR TOOTH CLUTCH FACINGS

• (and Other Special Molded Pieces)



American Friction Molded Gear Tooth Clutch Facings are produced using special blends of ingredients including thermosetting resins, reinforcing fibers and friction modifiers. Some of the fibers used to make these facings include kevlar, acrylic, carbon and glass. The finished facing is ground on both sides to OEM specifications or customers specific requirements. The resultant facing has excellent resistance to thermal shock, with high tensile and compressive strength.

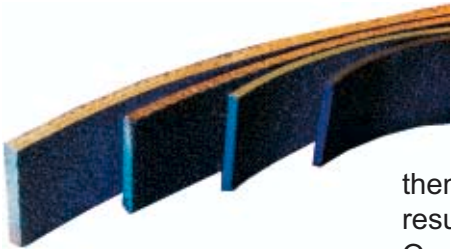


### ADVANTAGES

- 1) Extreme Heat Resistance
- 2) Coefficient of Friction Remains High at Extreme Temperatures
- 3) Resistant to Shear Loadings
- 4) Excellent Physical Strength
- 5) Coefficient of Friction Equal to OEM
- 6) Improved Wear Rate
- 7) Non Abrasive

- Special Molded Pieces are available. They will be manufactured to exact customer requirements.

## WOVEN BRAKE LINING



American Friction Woven Oilfield Brake Lining is produced using the highest quality heavy duty blended yarns available. These yarns are made using high tensile strength long selected organic and inorganic fibers twisted with brass wire for added strength and improved thermal conductivity. The woven tape is impregnated with high temperature resistant resins and friction modifiers which bonds the material (prevents unraveling), stabilizes the coefficient of friction, and improves wear life. The lining is then tightly compressed into a dense accurate form by calendering, then fully cured and sanded on both sides to the proper tolerance. The result is a very dense, durable and consistently performing brake lining. Our woven brake lining can be used effectively in hundreds of applications including cranes, hoists, industrial clutch facings and some oil service applications.

### ADVANTAGES

- 1) Extreme Heat Resistance
- 2) Coefficient of Friction Remains High at Extreme Temperatures
- 3) Excellent Cool Down (Heat Dissipation)
- 4) High Tensile Strength
- 5) Low Wear Rate
- 6) Non Abrasive

## WOVEN BRAKE BLOCK LIST PRICES (U.S.)

**For Molded Blocks:** Take Woven List Price & Mark Up 10%

Revised 5/01/02

Size	List Each	Size	List Each
3 x 1/2 x 12 .....	\$20.00	6 x 1-1/8 x 12 .....	\$87.00
4 x 3/8 x 3-1/8 .....	11.50	6-1/2 x 3/4 x 11-1/2 .....	70.00
4 x 3/8 x 9 .....	17.75	6-1/2 x 1 x 11-1/2 .....	76.00
4 x 1/2 x 9 .....	20.00	6-1/2 x 1 x 13 .....	84.00
4 x 5/8 x 9 .....	19.50	6-1/2 x 1-1/8 x 13 .....	102.00
4 x 5/8 x 11-1/2 .....	29.60	7 x 1/2 x 7-1/2 .....	45.00
5 x 1/2 x 11 .....	26.25	7 x 5/8 x 10-1/2 .....	55.00
5 x 5/8 x 11-3/4 .....	35.50	7 x 3/4 x 8-1/4 .....	63.00
5 x 5/8 x 12 .....	36.25	7 x 3/4 x 8-3/4 .....	63.00
5 x 3/4 x 7 .....	32.50	7 x 3/4 x 10-1/2 .....	68.00
5 x 3/4 x 11-1/2 .....	46.22	7 x 3/4 x 10-3/4 .....	68.00
5 x 3/4 x 12 .....	47.50	7 x 3/4 x 10-29/32 .....	68.00
6 x 3/8 x 7-1/2 .....	20.00	7 x 3/4 x 11-1/2 .....	69.00
6 x 3/8 x 9 .....	22.50	7 x 3/4 x 12 .....	71.00
6 x 3/8 x 9-1/2 .....	23.50	7 x 1 x 8 .....	62.00
6 x 1/2 x 9 .....	26.25	7 x 1 x 10-3/4 .....	76.00
6 x 1/2 x 11-1/16 .....	30.50	7 x 1 x 10-15/16 .....	76.00
6 x 1/2 x 11-1/2 .....	31.50	7 x 1 x 10-29/32 .....	76.00
6 x 1/2 x 11-3/4 .....	31.75	7 x 1 x 11-7/8 .....	82.00
6 x 5/8 x 8-1/4 .....	34.00	7 x 1 x 12 .....	82.50
6 x 5/8 x 9 .....	36.00	7 x 1-1/8 x 10-15/16 .....	94.00
6 x 5/8 x 9-1/4 .....	37.00	7 x 1-1/8 x 11-7/8 .....	95.00
6 x 5/8 x 9-13/16 .....	39.00	7 x 1-1/8 x 12 .....	96.00
6 x 5/8 x 10 .....	40.00	7-1/2 x 3/4 x 11 .....	70.00
6 x 3/4 x 4-3/4 .....	40.75	7-1/2 x 3/4 x 11-1/4 .....	70.00
6 x 3/4 x 5-5/8 .....	45.75	7-1/2 x 3/4 x 11-1/2 .....	74.00
6 x 3/4 x 9 .....	49.50	7-1/2 x 3/4 x 12 .....	74.00
6 x 3/4 x 10-1/4 .....	55.00	7-1/2 x 1 x 11 .....	89.00
6 x 3/4 x 11-1/2 .....	64.00	7-1/2 x 1 x 11-1/4 .....	89.00
6 x 3/4 x 12 .....	64.00	7-1/2 x 1 x 11-1/2 .....	89.00
6 x 1 x 10-1/4 .....	64.00	7-1/2 x 1 x 12 .....	89.00
6 x 1 x 12 .....	70.00	7-1/2 x 1-1/8 x 12 .....	104.00

## WOVEN BRAKE BLOCK LIST PRICES (U.S.)

**For Molded Blocks:** Take Woven List Price & Mark Up 10%

Revised 5/01/02

Size	List Each	Size	List Each
8 x 3/8 x 10-1/8 .....	40.00	8 x 1-1/8 x 11-3/4 .....	104.00
8 x 1/2 x 9 .....	40.00	8 x 1-1/8 x 12 .....	104.00
8 x 5/8 x 8-1/4 .....	50.00	8 x 1-1/8 x 12-1/2 .....	110.00
8 x 5/8 x 9-1/2 .....	53.00	8 x 1-1/8 x 13-21/32 .....	120.00
8 x 5/8 x 9-5/8 .....	53.00	8 x 1-1/4 x 11-1/2 .....	121.00
8 x 5/8 x 10 .....	53.00	8 x 1-1/4 x 11-3/4 .....	121.00
8 x 5/8 x 11 .....	55.00	8 x 1-1/4 x 12 .....	121.00
8 x 3/4 x 8 .....	60.00	8 x 1-1/4 x 12-1/2 .....	125.00
8 x 3/4 x 9 .....	65.00	8 x 1-1/4 x 13-21/32 .....	135.50
8 x 3/4 x 9-5/8 .....	67.00	8-1/2 x 1-1/8 x 13-3/4 .....	127.50
8 x 3/4 x 10 .....	68.00	8-1/2 x 1-1/4 x 13-3/4 .....	139.00
8 x 3/4 x 10-29/32 .....	72.00		
8 x 3/4 x 11-1/2 .....	75.00	9 x 3/4 x 10 .....	75.00
8 x 3/4 x 12 .....	75.00	9 x 3/4 x 10-1/4 .....	75.00
8 x 1 x 3 .....	40.00	9 x 3/4 x 12 .....	79.00
8 x 1 x 6 .....	55.00	9 x 1 x 10 .....	91.00
8 x 1 x 9-5/8 .....	76.00	9 x 1 x 10-1/4 .....	93.00
8 x 1 x 10 .....	82.00	9 x 1 x 10-3/4 .....	95.00
8 x 1 x 10-1/8 .....	82.00	9 x 1 x 12 .....	98.00
8 x 1 x 10-15/61 .....	82.00	9 x 1-1/8 x 10-1/4 .....	98.00
8 x 1 x 10-29/32 .....	82.00	9 x 1-1/8 x 10-3/4 .....	102.50
8 x 1 x 11-1/2 .....	85.00	9 x 1-1/8 x 12 .....	111.00
8 x 1 x 12 .....	89.00	9 x 1-1/8 x 13 .....	121.00
8 x 1 x 12-1/16 .....	89.50	9 x 1-1/4 x 12 .....	123.00
8 x 1 x 12-1/2 .....	91.50	9 x 1-1/4 x 13 .....	131.00
8 x 1 x 12-11/16 .....	93.50	9-3/4 x 1-1/4 x 2-1/2 .....	36.50
8 x 1-1/8 x 3 .....	45.00	9-3/4 x 1-1/4 x 12 .....	130.00
8 x 1-1/8 x 6 .....	57.00	9-3/4 x 1-1/4 x 13 .....	142.00
8 x 1-1/8 x 9-5/8 .....	86.00	9-3/4 x 1-1/4 x 13-3/16 .....	145.00
8 x 1-1/8 x 10-1/8 .....	89.50	10 x 3/4 x 9-3/4 .....	65.00
8 x 1-1/8 x 10-15/16 .....	102.00	10 x 1 x 3 .....	33.50
8 x 1-1/8 x 11-1/8 .....	102.00	10 x 1 x 6 .....	62.00
8 x 1-1/8 x 11-1/2 .....	102.00	10 x 1 x 10-1/4 .....	100.00

## WOVEN BRAKE BLOCK LIST PRICES (U.S.)

**For Molded Blocks:** Take Woven List Price & Mark Up 10%

Revised 5/01/02

<b>Size</b>	<b>List Each</b>	<b>Size</b>	<b>List Each</b>
10 x 1 x 10-3/4 .....	\$106.00	10 x 1-1/4 x 17-1/2 .....	\$184.00
10 x 1 x 10-15/16 .....	108.00	11 x 1-1/8 x 12 .....	140.00
10 x 1 x 12 .....	110.00	11 x 1-1/4 x 12 .....	161.00
10 x 1-1/8 x 3 .....	40.25	12 x 1-1/8 x 6 .....	78.00
10 x 1-1/8 x 6 .....	68.00	12 x 1-1/8 x 6-1/4 .....	80.00
10 x 1-1/8 x 10-1/4 .....	120.00	12 x 1-1/8 x 10-1/8 .....	120.00
10 x 1-1/8 x 10-3/4 .....	120.00	12 x 1-1/8 x 10-5/8 .....	130.00
10 x 1-1/8 x 10-15/16 .....	120.00	12 x 1-1/8 x 12 .....	143.00
10 x 1-1/8 x 11-3/4 .....	125.00	12 x 1-1/4 x 6 .....	88.00
10 x 1-1/8 x 12 .....	125.00	12 x 1-1/4 x 10-1/8 .....	139.00
10 x 1-1/8 x 17-5/16 .....	175.00	12 x 1-1/4 x 10-5/8 .....	147.00
10 x 1-1/8 x 17-1/2 .....	176.00	12 x 1-1/4 x 12 .....	163.00
10 x 1-1/4 x 11-1/2 .....	130.00	12 x 1-1/4 x 20-5/8 .....	270.00
10 x 1-1/4 x 11-3/4 .....	130.00		
10 x 1-1/4 x 12 .....	130.00		
10 x 1-1/4 x 12-3/4 .....	142.00		

## LIST PRICES

Revised 2/20/02

## BRASS BOLTS

(with KEP or NYLON LOCK NUTS)

### SIZE AND DESCRIPTION

### PRICE U.S.

#### 120 degree FILLISTER HEAD Bolt

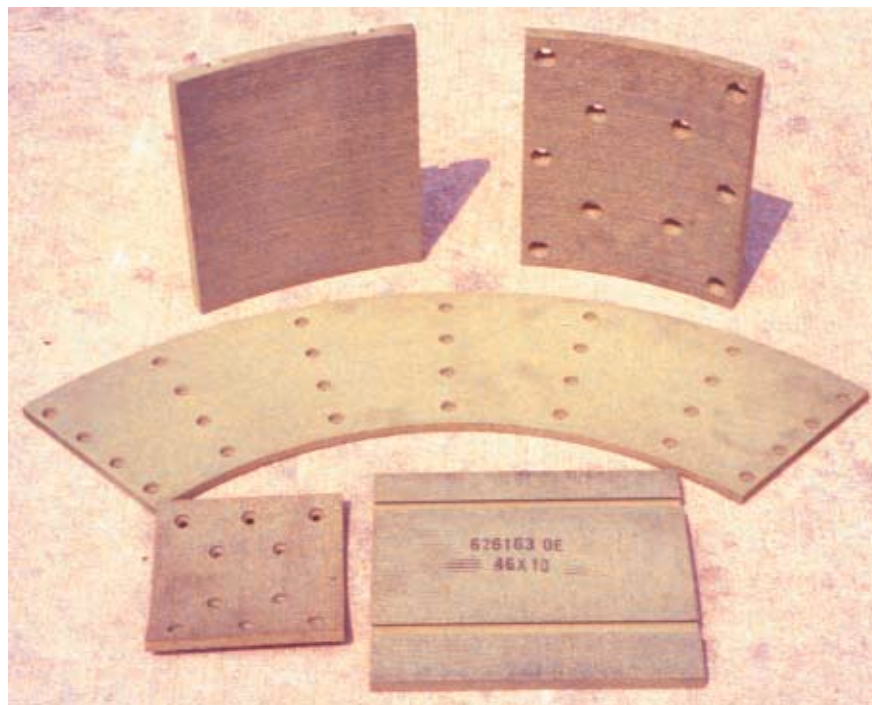
3/8 x 1-1/4	.76
3/8 x 1-1/2 & 1-3/4	.86
3/8 x 2	.96

#### 120 degree FLAT HEAD Bolt

5/16 x 1-1/4	.58
5/16 x 1-1/2	.67

## WOVEN PLUGS

5/8 x 3/8 (for 3/4" thk blk)	.86
5/8 x 1/2 (for 1" and up)	.86
49/64 x 3/8 (for 3/4" thk blk)	.86
49/64 x 1/2 (for 1" and up)	.86

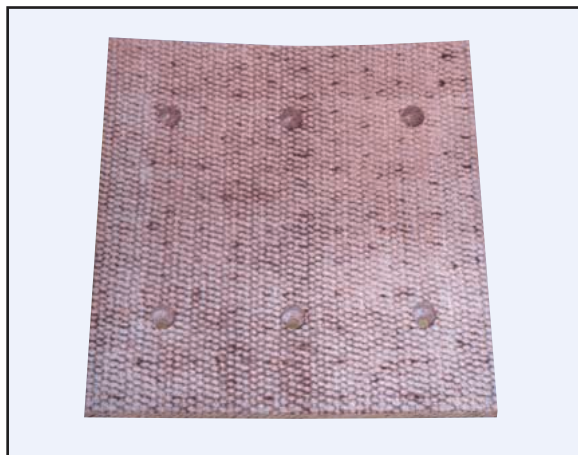


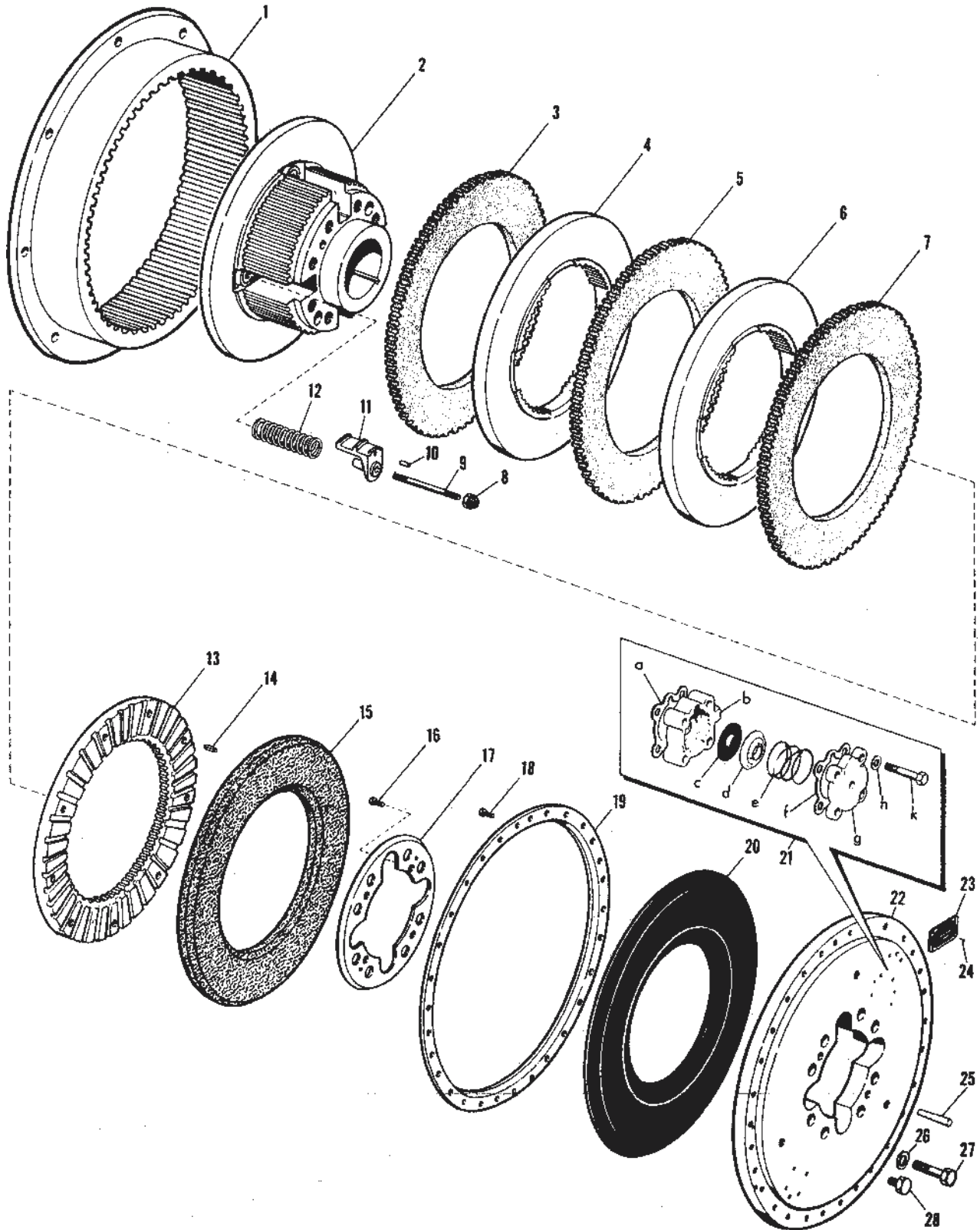
**American Friction manufactures clutch facings and brake lining for Twin Disc, Wichita, National "DyaFlex", Eaton "Airflex" "VC" and many other clutches and applications.**

## INTRODUCING...

### American Friction's New High Density Brake Block

The initial 12-1/2" x 1-1/4" tape is constructed of over 1000 strands of blended yarn. The layers are held together by cross stitches creating an interlocking weave which is packed by a 1200 lb. lay beam. This process creates a strong and extremely dense yet flexible tape.





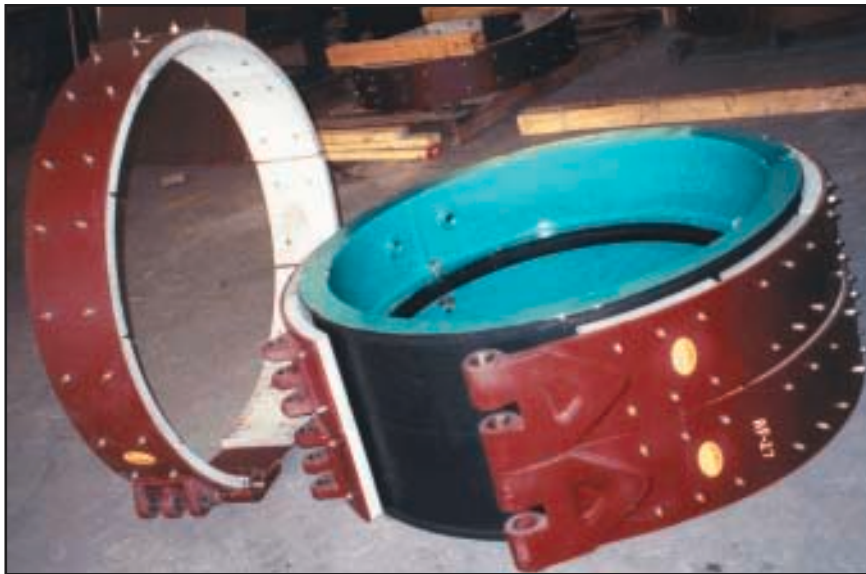
**PO-318 AIR OPERATED CLUTCH**





**American Friction stocks the most popular “PO” type Twin Disc Clutches and parts. Examples are: PO 218, PO 318, PO 224, PO 324, PO 330, PO 336, PO 342.**

**Opposing page is an example breakdown of a PO 318.**



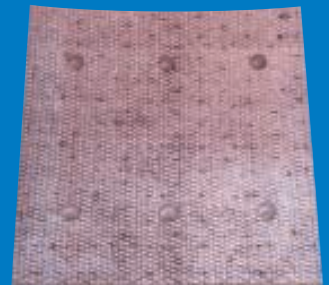
**American Friction stocks brake rims and bolts for popular drawworks. We can usually ship rims quickly even when not in stock. All our rims are “weld overlay” and 50 - 52 Rockwell hardness on the “C” Scale.**



**American Friction stocks new brake bands for the most popular drawworks. We offer complete refabrication of your old worn bands and will provide you with full certification. We can ship bands with brake blocks installed or separately as needed.**



**AS AMERICAN  
FRICTION Inc.**  
Authorized Stocking Distributor:



2401 Wilson Road • Humble, Texas 77396 • PO Box 729 • Humble, Texas 77347  
Phone 281-441-9420 • Fax 281-441-6050